

Specifications

Models	Z-34/22 DC		Z-34/22 Bi-Energy	
Measurements	US	Metric	US	Metric
Working height maximum*	40 ft 6 in	12.52 m	40 ft 6 in	12.52 m
Platform height maximum	34 ft 6 in	10.52 m	34 ft 6 in	10.52 m
Horizontal reach maximum	22 ft 3 in	6.78 m	22 ft 3 in	6.78 m
Up and over clearance maximum	15 ft	4.57 m	15 ft	4.57 m
A Platform length	2 ft 6 in	0.76 m	2 ft 6 in	0.76 m
B Platform width	4 ft 8 in	1.42 m	4 ft 8 in	1.42 m
C Height - stowed	6 ft 7 in	2.00 m	6 ft 7 in	2.00 m
D Length - stowed	18 ft 6 in	5.64 m	18 ft 6 in	5.64 m
E Storage height	7 ft 5 in	2.26 m	7 ft 5 in	2.26 m
A Storage length	13 ft 5 in	4.08 m	13 ft 5 in	4.08 m
A Width	5 ft 8 in	1.73 m	5 ft 8 in	1.73 m
A Wheelbase	6 ft 2 in	1.88 m	6 ft 2 in	1.88 m
A Ground clearance - center	6 in	0.15 m	6 in	0.15 m

Productivity

Lift capacity	500 lbs	227 kg	500 lbs	227 kg
Platform rotation	180°		180°	
Vertical jib rotation	139°		139°	
Turntable rotation	355° non-continuous		355° non-continuous	
Turntable tailswing	zero		zero	
Drive speed - stowed	4.0 mph	6.4 km/h	4.0 mph	6.4 km/h
Drive speed - raised**	.68 mph	1.1 km/h	.68 mph	1.1 km/h
Gradeability - stowed***	30%		30%	
Turning radius - inside	5 ft 9 in	1.75 m	5 ft 9 in	1.75 m
Turning radius - outside	13 ft 1 in	4 m	13 ft 1 in	4 m
Controls	24V DC proportional		24V DC proportional	
Tires - air filled	9 x 14.5 in		9 x 14.5 in	

Power

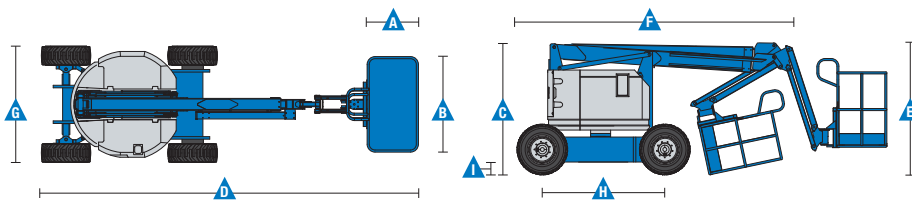
Power Source	48V DC (eight 6 V batteries 315 Ah capacity)	48V DC (eight 6 V batteries 315 Ah capacity) with Tier IV Kubota 13.3 Hp (9.9 kw) diesel driven alternator
Auxiliary Power Unit	24V DC	
Hydraulic Tank Capacity	4 gal	15.1 L
Fuel Tank Capacity	—	9.3 gal / 35.2 L

Weight****

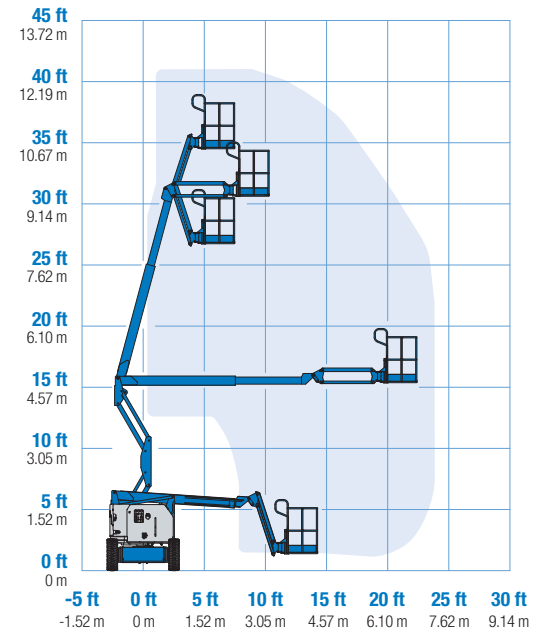
11,000 lbs	4,990 kg	12,000 lbs	5,443 kg
------------	----------	------------	----------

Standards Compliance

ANSI A92.5, CSA B354.4, EN 280, AS 1418.10



Range Of Motion Z-34/22 DC/Bi



* The metric equivalent of working height adds 2 m to platform height. U.S. adds 6 ft to platform height.
 ** In lift mode *(platform raised), the machine is designed to operate on firm, level surfaces only.
 *** Gradeability applies to driving on slopes. See operator's manual for details regarding slope ratings.
 **** Weight will vary depending on options and/or country standards.

Features

Standard Features

Measurements

- 40 ft 6 in (12.52 m) working height
- 22 ft 3 in (6.78 m) horizontal reach
- 15 ft (4.57 m) up and over clearance
- Up to 500 lbs (227 kg) lift capacity

Productivity

- 4 ft (1.22 m) jib boom with 139° working range
- Self-leveling platform
- Hydraulic platform rotation
- Fully proportional controls
- Thumb rocker steer
- Drive enable
- AC power to platform
- Horn
- Hour meter
- Tilt alarm
- Descent alarm
- 355° non-continuous turntable rotation
- Locking turntable covers (Bi-Energy only)
- Zero tailswing

Power

- 48V deep cycle battery pack
- 24V DC auxiliary power
- On board alternator powered by Tier IV Kubota 13.3 hp (9.9 kW) engine (Bi-energy model only)
- Battery charge indicator (BCI)*
- Universal 30A battery smart charger

Easily Configured To Meet Your Needs

Platform Options

- Steel 4 ft 8 in (1.42 m) (standard)
- Steel 3 ft 10 in (1.17 m)

Jib

- 4 ft (1.22 m) jib boom

Power

- 48V DC power source

Drive

- 2WD

Tire Options

- Industrial air-filled (standard ANSI/CSA)
- Industrial foam-filled (standard CE/AUS)
- Industrial non-marking air-filled
- Industrial non-marking foam-filled
- Sealant treated air-filled



Options & Accessories

Productivity Options

- Platform swing gate
- Half-mesh platform inserts with swing gate
- Platform top auxiliary rail
- Air line to platform
- Aircraft protection package*
- Fire resistant hydraulic oil
- Biodegradable hydraulic oil
- Hostile environment package
- Tool tray
- Fluorescent tube caddy
- Pipe cradle (pair)
- Flashing beacon
- Platform work lights
- Lockable platform control box cover

Power Options

- AGM batteries
- EE UL583 Fire Protection rating (DC models only)
- Battery charge indicator (BCI)**
- Low voltage interrupt with BCI
- Cold Weather Package (Bi-Energy only)
- 800 watt 120 V AC power inverter (DC only)

* Reduces platform weight capacity to 440 lbs
** Standard on Bi-Energy only.

Genie United States

18340 NE 76th Street
P.O. Box 97030
Redmond, Washington 98073-9730
Telephone +1 (425) 881-1800
Toll Free in USA/Canada +1 (800)-536-1800
Fax +1 (425) 883-3475

Genie Europe

The Maltings
Wharf Road
Grantham NG31 6BH
UK
Telephone +44 (0)1476 584333
Fax +44 (0)1476 584334
Email: AWP-InfoEurope@terex.com

Distributed By:

Effective Date: January, 2013. Product specifications and prices are subject to change without notice or obligation. The photographs and/or drawings in this document are for illustrative purposes only. Refer to the appropriate Operator's Manual for instructions on the proper use of this equipment. Failure to follow the appropriate Operator's Manual when using our equipment or to otherwise act irresponsibly may result in serious injury or death. The only warranty applicable to our equipment is the standard written warranty applicable to the particular product and sale and we make no other warranty, express or implied. Products and services listed may be trademarks, service marks or trade names of Terex Corporation and/or their subsidiaries in the USA and many other countries. Genie is a registered trademark of Terex South Dakota, Inc. © 2013 Terex Corporation.